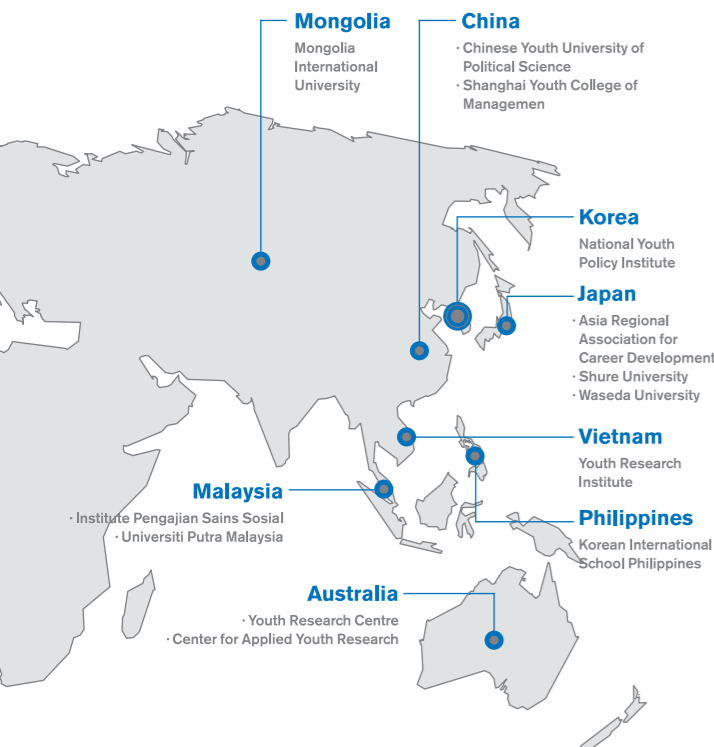


Since its foundation in 1989, the National Youth Policy Institute has been dedicated to research that supports the development and operation of Korean youth policies as the only national research hub specialized on youth issues.

## NYPI History

- Jul. 1989** Korea Youth Institute established under Article 19 of the Juvenile Fostering Act
- Jan. 1993** Reorganized into the Korea Institute for Youth Development under Article 50 of the Framework Act on Youth
- Jan. 1999** Became a government-funded research institute belonging to the Office of the Prime Minister under the Act of the Establishment, Operation and Fostering of Government-Funded Research Institutes, etc.
- May. 2007** Renamed the National Youth Policy Institute under the Act of the Establishment, Operation and Fostering of Government-Funded Research Institutes, etc.
- Jun. 2010** Opened the Youth Policy Analysis & Evaluation Center
- May. 2014** Opened the National Center for Dropout Prevention & Alternative Education
- Dec. 2014** Relocated to the Sejong National Research Complex in Sejong City
- May. 2018** Opened the School Violence Prevention Education Support Center
- Dec. 2018** Opened the Youth Career Development Center
- Jan. 2024** Opened the Wee Project Research Center
- Apr. 2024** Inauguration of the 14th President Paek, Il-hyun



## NYPI Periodicals



### NYPI Bluenote: Issue & Policy

Analyzes current youth policy issues and suggests research results and policy directions based on research reports



### NYPI Bluenote: Statistics

Analyzes the current status of youths based on the statistical data from research reports



### NYPI Bluenote: Korean Youth Policy Review

English version of 'NYPI Bluenote Issue & Policy'



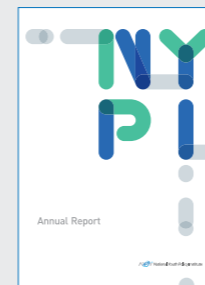
### Studies on Korean Youth

A quarterly journal that publishes trends and new findings of Korean youth research (The first issue published in 1990)



### Studies on Korean Youth

A collection of abstracts from Studies on Korean Youth reports



### NYPI Annual Report

An English periodical that introduces NYPI's research reports and activities

## Online channels operated by the NYPI



**Homepage**  
[www.nypi.re.kr](http://www.nypi.re.kr)



**NYPI e-library**  
<https://lib.nypi.re.kr>



**NYPI YouTube**  
<https://www.youtube.com/@nypi1989>



**NYPI Facebook**  
[www.facebook.com/nypipage](http://www.facebook.com/nypipage)



**NYPI Instagram**  
[www.instagram.com/nypi1989](http://www.instagram.com/nypi1989)

**NYPI National Youth Policy Institute**

Social Policy Building, Sejong National Research Complex, 370, Sicheong-daero, Sejong-si, 30147, Korea

Tel. 044)415-2114 Fax. 044)415-2369



Mark of Responsible Forestry

The NYPI leads the healthy development and happiness of future generations.



## NYPI's Management Objectives

### Management Vision

To become a policy research institute that leads the healthy development and happiness of future generations

### Management Objective 01

Develop and support customized leading policies for future generations

- Research customized policies considering youth characteristics
- Lead policy research to respond to future social changes
- Conduct field-oriented policy research to improve policy effectiveness

### Management Objective 02

Promote and disseminate research achievements

- Systematic management and improvement of research output
- Disseminate user-friendly results and enhance research networks

### Management Objective 03

Management innovation based on practicing social responsibility and communication

- Achieve socially responsible management
- Implement communication-based management to foster mutual growth

## NYPI Global Network

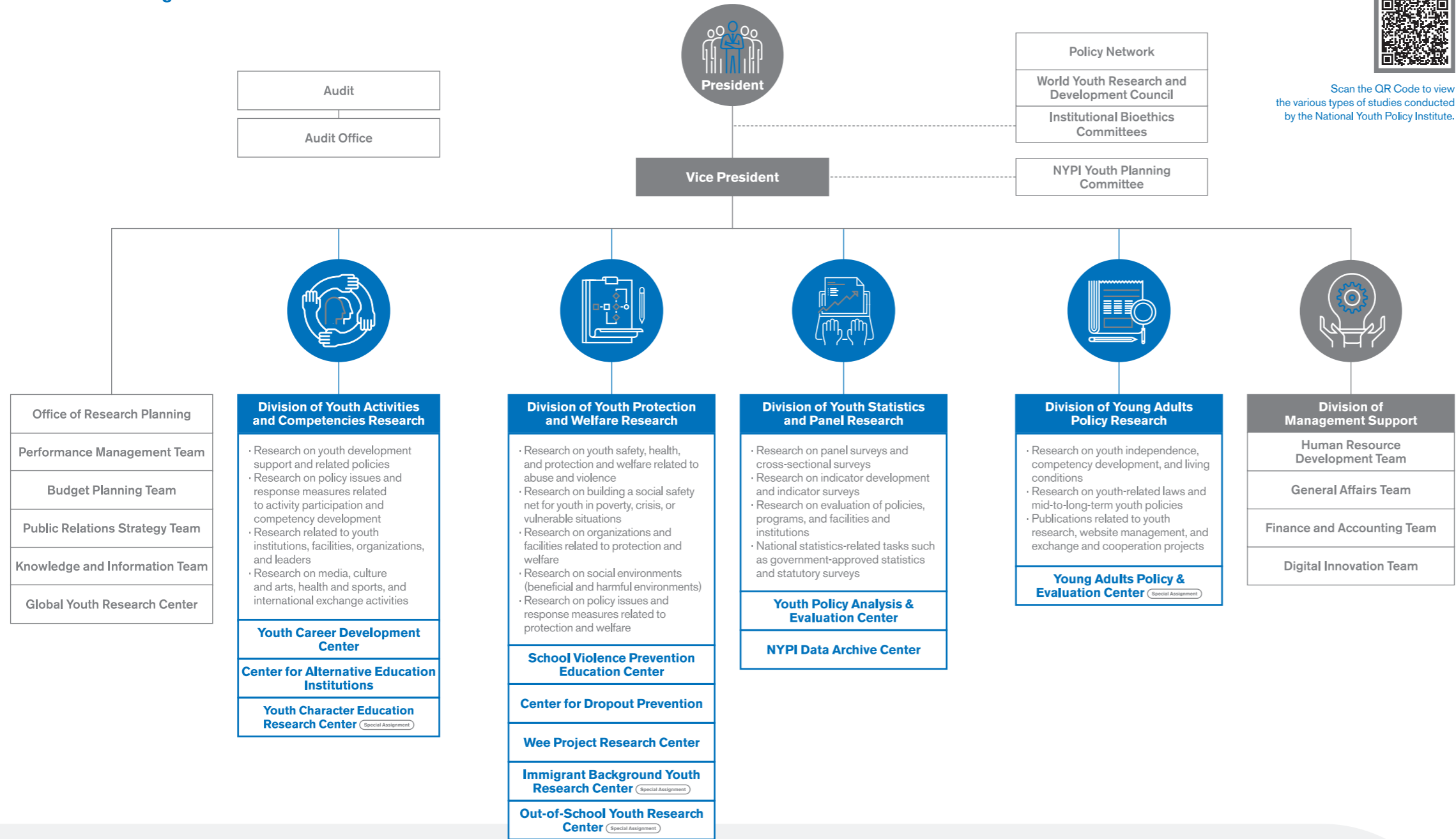
### The World Association of Research and Development for Youth

The member institutions maintain close and cooperative relationships in research by sharing research outcomes and information and organizing joint seminars.



**NYPI National Youth Policy Institute**

# NYPI Research Organization and Areas



Scan the QR Code to view the various types of studies conducted by the National Youth Policy Institute.

## Since 2021 Global Youth Research Center

- Collection of research trends and data related to foreign youth policies
- Manage academic exchange with international youth-related organizations and overseas research institutes

## Since 2018 Youth Career Development Center

- Development and promotion of career education content for the underprivileged youth
- Support customized career education support and mentoring

## Since 2014 Center for Alternative Education Institutions

- Research and surveys for the development of alternative education institutions
- On-site support for alternative education institutions and training of professionals

## Since 2018 School Violence Prevention Education Center

- Development and analysis of a school violence prevention program ('Eoulim') and its effectiveness
- Establishment of a support system for school violence prevention education

## Since 2014 Center for Dropout Prevention

- Policy research and support for preventing school dropout
- School consulting and monitoring

## Since 2024 Wee Project Research Center

- Policy research on the Wee project
- Development and distribution of materials to promote student counseling

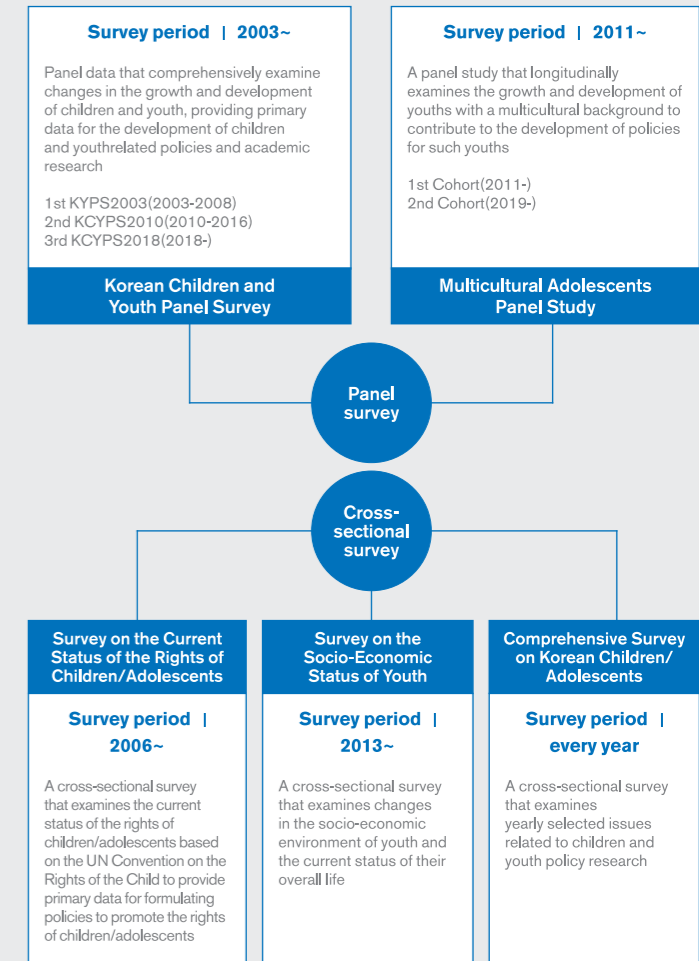
## Since 2010 Youth Policy Analysis & Evaluation Center

- Support for the development of mid-to-long-term youth policies
- Development of youth policy agendas
- Development of indicators for evaluating youth policy outcomes

## Since 2022 NYPI Data Archive Center

- Operation of the Korea Child and Youth Data Archive
- Management of government-approved statistics and Statistics Korea data
- Operation of the NYPI cross-sectional survey system

# NYPI Statistical Database



## Entrusted Surveys

| Survey Name  | Year  | Ministry  | Purpose  |
|--|-------|---|--|
| Comprehensive Survey on the Current Status of Adolescents                          | 2011~ | Ministry of Gender Equality and Family Build                | Build data on the overall life of adolescents  |
| Survey on the Current Status of At-Risk Adolescents                                | 2021~ | Ministry of Gender Equality and Family                      | Build data to examine the comprehensive current status of at-risk adolescents  |
| Survey on Adolescents' Use of Media and the Current Status of Harmful Environments | 2016~ | Ministry of Gender Equality and Family                      | Build data to examine adolescents' contact with harmful environments, etc. (Comprehensive Survey on the Current Status of Adolescents' Contact with Harmful Environments, 1999~2014)                     |
| Survey on the Current Status of Those Receiving Special Education                  | 2021~ | Ministry of Education, Chungcheongnamdo Office of Education | Build primary research data for examining the current status of the violation of human rights of those receiving special education and protecting their human rights                                     |
| Survey on the Current Status of School Violence                                    | 2012~ | Ministry of Education and provincial Offices of Education   | Collects comprehensive data on school violence through a full survey and conducts in-depth analysis through a sample survey to establish a foundation for developing school violence prevention measures |

Scan the QR Code to check the database on youth-related statistics from the NYPI Youth and Children Data Archive.

